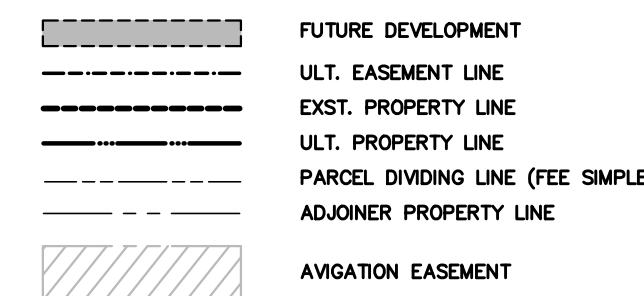


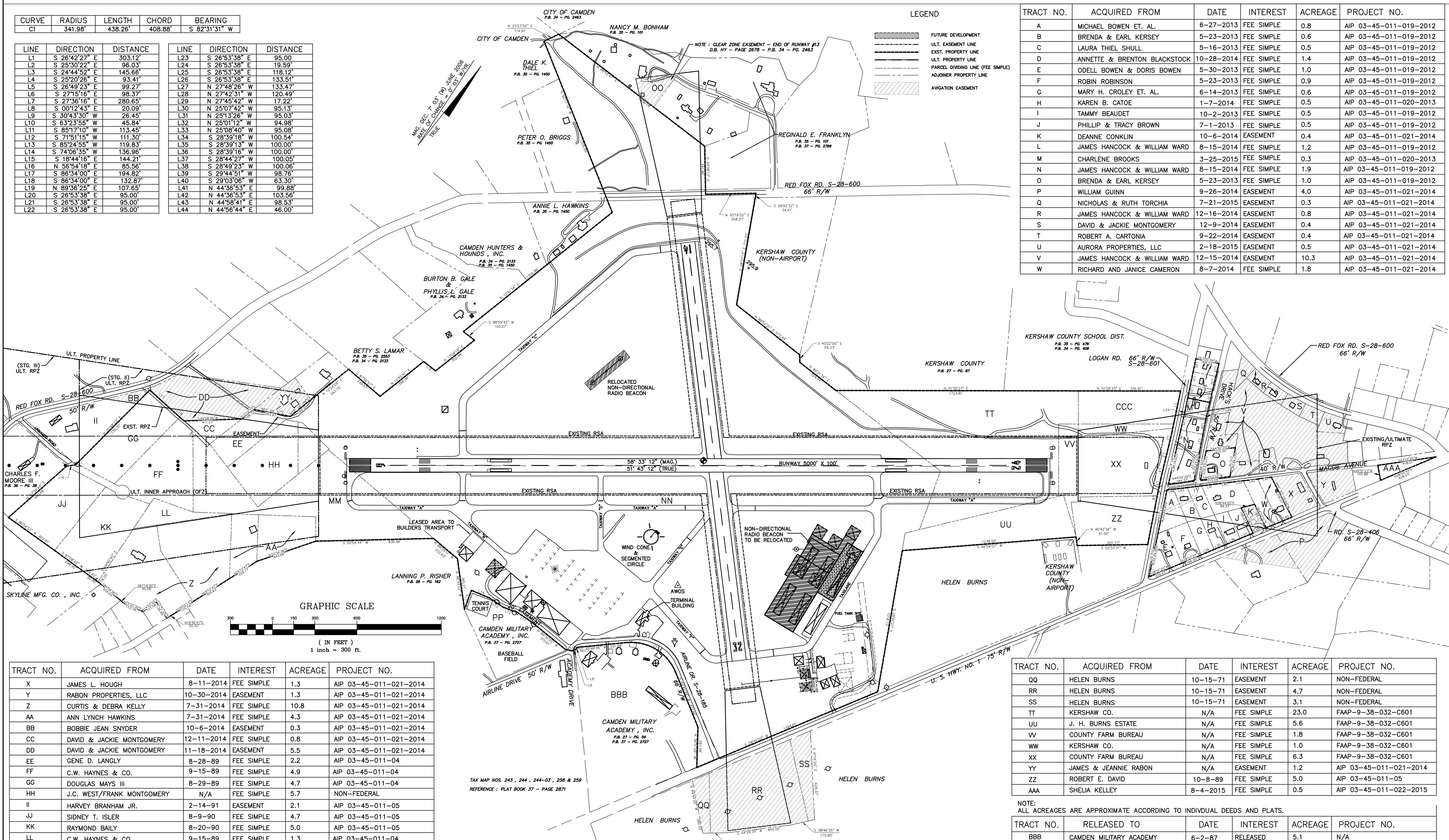
CURVE	RADIUS	LENGTH	CHORD	BEARING
CI	341.98'	438.26'	408.88'	S 82°31'31" W

LINE	DIRECTION	DISTANCE	LINE	DIRECTION	DISTANCE
L1	S 26°42'27" E	303.12'	L23	S 26°53'38" E	95.00'
L2	S 25°30'22" E	96.03'	L24	S 26°53'38" E	119.59'
L3	S 24°44'52" E	145.66'	L25	S 26°53'38" E	118.12'
L4	S 25°20'26" E	93.41'	L26	S 26°53'38" E	133.51'
L5	S 26°49'23" E	99.27'	L27	N 27°48'26" W	133.47'
L6	S 27°15'16" E	98.37'	L28	N 27°42'31" W	120.49'
L7	S 27°36'16" E	280.65'	L29	N 27°45'42" W	17.22'
L8	S 00°12'43" E	20.09'	L30	N 25°07'42" W	95.13'
L9	S 30°43'30" W	26.45'	L31	N 25°13'26" W	95.03'
L10	S 63°23'55" W	45.84'	L32	N 25°01'12" W	94.98'
L11	S 85°17'10" W	113.45'	L33	N 25°08'40" W	95.08'
L12	S 71°51'15" W	111.30'	L34	S 28°59'18" W	100.54'
L13	S 85°24'55" W	119.83'	L35	S 28°59'13" W	100.00'
L14	S 74°08'35" W	136.96'	L36	S 28°59'16" W	100.00'
L15	S 18°44'16" E	144.21'	L37	S 28°44'27" W	100.05'
L16	N 56°54'18" E	85.56'	L38	S 28°49'23" W	100.06'
L17	S 86°34'00" E	194.82'	L39	S 29°44'51" W	98.76'
L18	S 86°34'00" E	132.87'	L40	S 29°03'06" W	63.30'
L19	N 89°36'25" E	107.65'	L41	N 44°36'53" E	99.88'
L20	S 26°53'38" E	95.00'	L42	N 44°36'53" E	103.56'
L21	S 26°53'38" E	95.00'	L43	N 44°58'41" E	98.53'
L22	S 26°53'38" E	95.00'	L44	N 44°56'44" E	46.00'

LEGEND



TRACT NO.	ACQUIRED FROM	DATE	INTEREST	ACREAGE	PROJECT NO.
A	MICHAEL BOWEN ET. AL.	6-27-2013	FEE SIMPLE	0.8	AIP 03-45-011-019-2012
B	BRENDA & EARL KERSEY	5-23-2013	FEE SIMPLE	0.6	AIP 03-45-011-019-2012
C	LAURA THIEL SHULL	5-16-2013	FEE SIMPLE	0.5	AIP 03-45-011-019-2012
D	ANNETTE & BRENTON BLACKSTOCK	10-28-2014	FEE SIMPLE	1.4	AIP 03-45-011-019-2012
E	ODELL BOWEN & DORIS BOWEN	5-30-2013	FEE SIMPLE	1.0	AIP 03-45-011-019-2012
F	ROBIN ROBINSON	5-23-2013	FEE SIMPLE	0.9	AIP 03-45-011-019-2012
G	MARY H. CROLEY ET. AL.	6-14-2013	FEE SIMPLE	0.6	AIP 03-45-011-019-2012
H	KAREN B. CATOE	1-7-2014	FEE SIMPLE	0.5	AIP 03-45-011-020-2013
I	TAMMY BEAUDET	10-2-2013	FEE SIMPLE	0.5	AIP 03-45-011-019-2012
J	PHILLIP & TRACY BROWN	7-1-2013	FEE SIMPLE	0.5	AIP 03-45-011-019-2012
K	DEANNE CONKLIN	10-6-2014	EASEMENT	0.4	AIP 03-45-011-021-2014
L	JAMES HANCOCK & WILLIAM WARD	8-15-2014	FEE SIMPLE	1.2	AIP 03-45-011-019-2012
M	CHARLENE BROOKS	3-25-2015	FEE SIMPLE	0.3	AIP 03-45-011-020-2013
N	JAMES HANCOCK & WILLIAM WARD	8-15-2014	FEE SIMPLE	1.9	AIP 03-45-011-019-2012
O	BRENDA & EARL KERSEY	5-23-2013	FEE SIMPLE	1.0	AIP 03-45-011-019-2012
P	WILLIAM GUINN	9-26-2014	EASEMENT	4.0	AIP 03-45-011-021-2014
Q	NICHOLAS & RUTH TORCHIA	7-21-2015	EASEMENT	0.3	AIP 03-45-011-021-2014
R	JAMES HANCOCK & WILLIAM WARD	12-16-2014	EASEMENT	0.8	AIP 03-45-011-021-2014
S	DAVID & JACKIE MONTGOMERY	12-9-2014	EASEMENT	0.4	AIP 03-45-011-021-2014
T	ROBERT A. CARTONIA	9-22-2014	EASEMENT	0.4	AIP 03-45-011-021-2014
U	AURORA PROPERTIES, LLC	2-18-2015	EASEMENT	0.5	AIP 03-45-011-021-2014
V	JAMES HANCOCK & WILLIAM WARD	12-15-2014	EASEMENT	10.3	AIP 03-45-011-021-2014
W	RICHARD AND JANICE CAMERON	8-7-2014	FEE SIMPLE	1.8	AIP 03-45-011-021-2014



TRACT NO.	ACQUIRED FROM	DATE	INTEREST	ACREAGE	PROJECT NO.
X	JAMES L. HOUGH	8-11-2014	FEE SIMPLE	1.3	AIP 03-45-011-021-2014
Y	RABON PROPERTIES, LLC	10-30-2014	EASEMENT	1.3	AIP 03-45-011-021-2014
Z	CURTIS & DEBRA KELLY	7-31-2014	FEE SIMPLE	10.8	AIP 03-45-011-021-2014
AA	ANN LYNCH HAWKINS	7-31-2014	FEE SIMPLE	4.3	AIP 03-45-011-021-2014
BB	BOBBIE JEAN SNYDER	10-6-2014	EASEMENT	0.3	AIP 03-45-011-021-2014
CC	DAVID & JACKIE MONTGOMERY	12-11-2014	FEE SIMPLE	0.8	AIP 03-45-011-021-2014
DD	DAVID & JACKIE MONTGOMERY	11-18-2014	EASEMENT	5.5	AIP 03-45-011-021-2014
EE	GENE D. LANGLY	8-28-89	FEE SIMPLE	2.2	AIP 03-45-011-04
FF	C.W. HAYNES & CO.	9-15-89	FEE SIMPLE	4.9	AIP 03-45-011-04
GG	DOUGLAS MAYS III	8-29-89	FEE SIMPLE	4.7	AIP 03-45-011-04
HH	J.C. WEST/FRANK MONTGOMERY	N/A	FEE SIMPLE	5.7	NON-FEDERAL
I	HARVEY BRANHAM JR.	2-14-91	EASEMENT	2.1	AIP 03-45-011-05
JJ	SIDNEY T. ISLER	8-9-90	FEE SIMPLE	4.7	AIP 03-45-011-05
KK	RAYMOND BAILY	8-20-90	FEE SIMPLE	5.0	AIP 03-45-011-05
LL	C.W. HAYNES & CO.	9-15-89	FEE SIMPLE	1.3	AIP 03-45-011-04
MM	C.W. HAYNES & CO.	N/A	FEE SIMPLE	11.4	NON-FEDERAL
NN	EXISTING AIRPORT	N/A	FEE SIMPLE	299.2	ORIGINAL
OO	NANCY M. BONHAM	10-26-71	EASEMENT	3.1	NON-FEDERAL
PP	KERSHAW CO. SCHOOL DIST.	N/A	FEE SIMPLE	4.0	NON-FEDERAL

TRACT NO.	ACQUIRED FROM	DATE	INTEREST	ACREAGE	PROJECT NO.
QQ	HELEN BURNS	10-15-71	EASEMENT	2.1	NON-FEDERAL
RR	HELEN BURNS	10-15-71	EASEMENT	4.7	NON-FEDERAL
SS	HELEN BURNS	10-15-71	EASEMENT	3.1	NON-FEDERAL
TT	KERSHAW CO.	N/A	FEE SIMPLE	23.0	FAAP-9-38-032-C601
UU	J. H. BURNS ESTATE	N/A	FEE SIMPLE	5.6	FAAP-9-38-032-C601
VV	COUNTY FARM BUREAU	N/A	FEE SIMPLE	1.8	FAAP-9-38-032-C601
WW	KERSHAW CO.	N/A	FEE SIMPLE	1.0	FAAP-9-38-032-C601
XX	COUNTY FARM BUREAU	N/A	FEE SIMPLE	6.3	FAAP-9-38-032-C601
YY	JAMES & JEANNIE RABON	N/A	EASEMENT	1.2	AIP 03-45-011-021-2014
ZZ	ROBERT E. DAVID	10-8-89	FEE SIMPLE	5.0	AIP 03-45-011-05
AAA	SHELIA KELLEY	8-4-2015	FEE SIMPLE	0.5	AIP 03-45-011-022-2015

NOTE: ALL ACREAGES ARE APPROXIMATE ACCORDING TO INDIVIDUAL DEEDS AND PLATS.

TRACT NO.	RELEASED TO	DATE	INTEREST	ACREAGE	PROJECT NO.
BBB	CAMDEN MILITARY ACADEMY	6-2-87	RELEASED	5.1	N/A
CCC	CAMDEN MILITARY ACADEMY	6-2-87	RELEASED	4.1	N/A

NOTE: PROPERTY MAP WAS PREPARED FROM A SURVEY DONE BY DANIEL RIDDICK & ASSOCIATES, CAMDEN, S.C. AUG. 12, 1991, AND INFORMATION SUPPLIED BY THE FEDERAL AVIATION ADMINISTRATION, ATLANTA AIRPORTS DISTRICT OFFICE, GEORGIA, SEP. 23, 1991. ADDITIONALLY DATA WAS UTILIZED FROM A SURVEY DONE BY W. K. DICKSON & CO., INC., DATED SEPTEMBER 12, 2012 AND MARCH 13, 2014. W.K. DICKSON & CO. ASSUMES NO RESPONSIBILITY FOR THE ACCURACY OF THE DATA SUPPLIED BY SOURCES OUTSIDE OF THE COMPANY.

REV. NO.	DESCRIPTION	DATE
6	UPDATED FOR AIP 3-45-011-019/020/021/022	JULY 2015
5	UPDATED FOR AIP 3-45-011-14	FEB. 2008
4	UPDATED FOR AIP 3-45-011-13	JULY 2006
3	UPDATED FOR AIP 3-45-011-12	4/28/04
2	REVISED PER FAA COMMENTS	4/13/04
1	REVISED PER FAA REVIEW OF DRAFT	12/23/03

PROJECT MANAGER: GAV SUITE 110, 1001 PINNACLE POINT DRIVE, COLUMBIA, SC 29223, (803) 786-4261

WOODWARD FIELD KERSHAW COUNTY CAMDEN, SOUTH CAROLINA

RELEASED FOR: APPROVALS, BIDDING, CONSTRUCTION, RECORD DWG.

WOODWARD FIELD KERSHAW COUNTY CAMDEN, SOUTH CAROLINA

EXHIBIT "A"

11 / 11